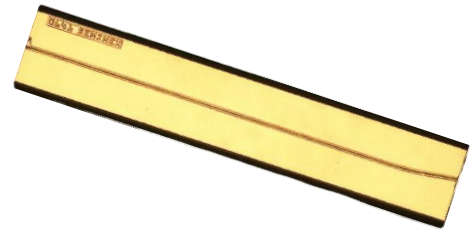


## Part Number: CHP-312

RSOA Chip  
Single-Mode RSOA Curved Waveguide  
Wavelength at O band, 1310nm



## Features

- 1mm RSOA Chip
- High Dynamic Range
- High Efficiency
- Standard RSOA Bare Die
- Cost Effective

## Application

- Gain Element for External Cavity Laser
- Optical Communications
- LiDAR
- Free Space Communications
- Network Test Equipment



SemiNex delivers the highest available power at infrared wavelengths between 12xx and 19xx nm. When necessary, we will further optimize the design of our InP & GaSb laser chips to meet our customers' specific optical and electrical performance needs. Diodes, bars and packages are tested to meet customer and market performance demands. Typical results and packaging options are shown. Contact SemiNex for additional details or to discuss your specific requirements.

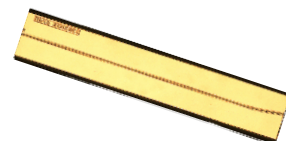
SemiNex Corporation • 153 Andover Street, Suite 201, Danvers, MA 01923 • 978-326-7700 • sales@seminex.com

# RSOA Chip



## Specification

CHP-312



Optical	Symbol	Typ.	Units
Center Wavelength	$\lambda_c$	1310	nm
ASE Output Power @ 0.45A	P <sub>out</sub>	6	mW
Aperture Width	AW	4	$\mu\text{m}$
Aperture Height	AH	1	$\mu\text{m}$
Spectral Width	$\Delta\lambda$	80	nm @ 3dB
Beam Exit Angle	$\theta_{\text{EXT}}$	19.5	Degree
Fast Axis Div.	$\theta_{\perp}$	30	Deg FWHM
Slow Axis Div.	$\theta_{\parallel}$	20	Deg FWHM
Front Facet Reflectivity		<0.1%	
Rear Face Reflectivity		98%	
Waveguide		Curved	
Electrical	Symbol		Units
Operating Current	I <sub>op</sub>	0.45	A
Operating Voltage	V <sub>op</sub>	2	V
Mechanical		Range	Units
Chip Width		500	$\mu\text{m}$
Operating Temp.**		-20 to 75	°C
Storage Temp.		-40 to 85	°C

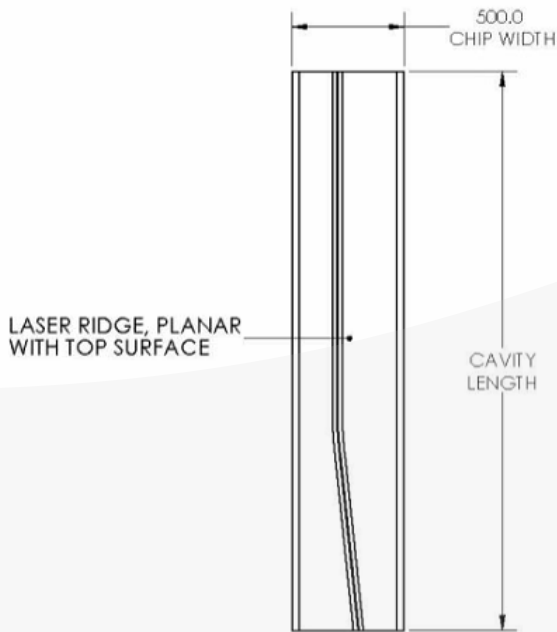
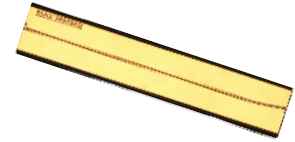
\*Specified values are rated at a constant heat sink temperature of 20°C.

\*\*High temperature operation will reduce performance and MTTF.  
Unless otherwise indicated all values are nominal.

# RSOA Chip



## Mechanical Drawing



CHIP ATTRIBUTES	
WAVELENGTH	1310 ±20nm
APERTURE WIDTH	4µm ±1µm
CHIP WIDTH	0.500mm ±10µm
THICKNESS	160µm ±10µm
CAVITY LENGTH	2.5mm ±10µm

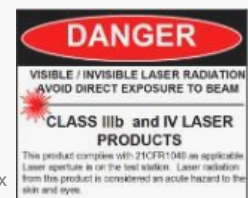
P-METAL		
MATERIAL	THICKNESS (nm)	TOLERANCE (nm)
Ti	50	±10
Pt	125	±25
Au	250	±50

N-METAL		
MATERIAL	THICKNESS (nm)	TOLERANCE (nm)
Ti	30	±10
Pt	125	±25
Au	400	±40



\*Chip length of CHP-312 is 1mm & Wavelength is 1310nm. The diagram shown is for 2.5mm chip length with a wavelength of 1550nm.

All statements, technical information and recommendations related to the product herein are based upon information believed to be reliable or accurate. The accuracy or completeness herein is not guaranteed, and no responsibility is assumed for any inaccuracies. The user assumes all risks and liability whatsoever in connection with the use of a product or its application. SemiNex Corporation reserves the right to change at any time without notice the design, specification, deduction, fit or form of its described herein, including withdrawal at any time of a product offered for sale herein. Users are encouraged to visit [www.seminex.com](http://www.seminex.com) for the latest data. SemiNex Corporation makes no representations that the products herein are free from any intellectual property claims of others. Please contact SemiNex for more information. 2016 SemiNex Corporation



SemiNex Corporation • 153 Andover Street, Suite 201, Danvers, MA 01923 • 978-326-7700 • [sales@seminex.com](mailto:sales@seminex.com)