

QD Laser, Inc. delivers high-performance semiconductor lasers and high quality quantum dot/quantum well wafers on GaAs platform for datacom and industrial application.

■ 532-594 nm Compact visible lasers



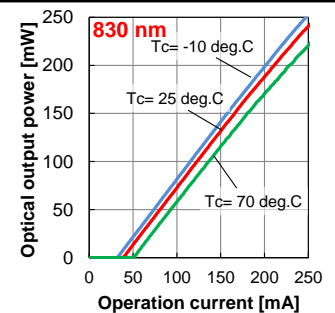
- 532, 561, 594 nm/5, 20, 30, 50 mW
- 488 nm, **samples in Dec. 2016**
- Frequency conversion technology
- 50 ps gain-switched operation with 50 mW peak power
- Low power consumption
- Spectral single mode
- Modulation capability
- Fiber pigtail option
- 50 ps gain-switched driver



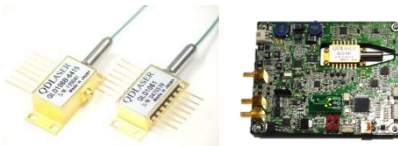
■ 640-940 nm High power Fabry-Perot lasers



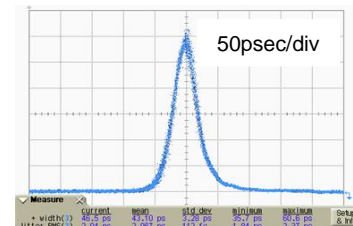
- 640 nm, 30 mW
- 660 nm, 50/100/120 mW
- 785 nm, 100 mW
- 830 nm, 210 mW **New!**
- 940 nm, 285 mW **New!**
- CW and Pulsed operation
- With monitor PD



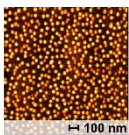
■ 1030-1180 nm DFB lasers



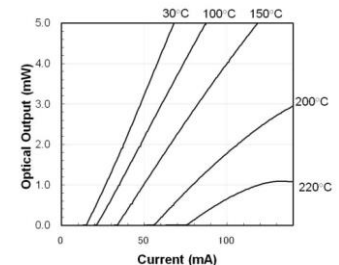
- Excellent spectral stability
- Wide wavelength availability of 1030/1053/1064/1080/1120/1180 nm
- Gain switched optical pulse of 50/20 ps
- High peak power of 400 mW/1 ns
- 14 pin BFY package/
7pin BFY package with SMPM
- Driver board for 50/20 ps operation



■ 1240-1300 nm Quantum dot lasers



- Quantum dot technology
- Superior temperature stability
- High temperature operations 125/150/175/200°C
- Customized chips for Si photonics



■ Epitaxial wafers on GaAs substrates



- Quantum dot/well wafers, 860-1300 nm
- DBR mirror, RTD and HEMT
- Customized epitaxial structures
- Possible grown layers
- GaAs, AlGaAs, InGaAs, InAs(or InGaAs) QDs



■ 1310 / 1550 nm InGaAsP DFB lasers

- 1310 nm 8 mW DFB-LD TO-CAN, **samples in Apr. 2016**
- 1550 nm 50/80 mW DFB-LD BFY **New!**

Product Line-up

Category	λ (nm)	LD type	Package type	Product number	Description	Status
1240-1300 nm Quantum Dot lasers	1300	FP	TO-CAN (Φ5.6) with lens	QLF1339-AA/QLF133A-P5	155 Mbps for Datacom wo / with mPD	MP
		FP		QLF133B-P10-WT	10 mW TOCAN with mPD up to 125°C	ES
		FP		QLF1335-AD/AE/T200	High temperature up to 150/175/200°C	CS/ES
		DFB		QLD1335-AA	High temperature up to 125°C	ES
	1240	DFB		QLD123F-4010	10 mW	ES
	1300	FP	Chip	QLF1312-P10	10 mW 155 Mbps for datacom	MP
		FP		QLF131J-HA	10 mW chip output power up to 98°C	ES
	1300	FP		QLF131F-P16	16 mW chip output power up to 110°C	ES
	1240	DFB	Butterfly PKG with TEC /PMF	QLD1261-4005	5 mW fiber output power	ES
	1030-1180 DFB lasers	1064	DFB	Butterfly PKG with TEC /PMF	QLD1061	30 mW fiber output power
1053		DFB	QLD1061-5330		30 mW fiber output power	CS
1030		DFB	QLD1061-3030		30 mW fiber output power	CS
1064		DFB	QLD106D-64D0		400 mW fiber output power (Pulsed)	CS
1120 1180		DFB	QLD1161-2030		30 mW fiber output power	ES
			QLD1161-8030			
1070 1083		DFB	QLD1061-7030		30 mW fiber output power	ES
			QLD1061-8330			
1064-1188		DFB/SOA	QLA1x61-xxA0		100 mW fiber output power/SOA integration 1064, 1122, 1188 nm	ES
1030 1064		DFB	QLD106G-3010 QLD106G-6410		20 ps, butterfly with SMPM connector	ES
NIR		DFB	Driver board	QC2D1x6x-xxxx QC6D1x6x-xxxx QC8D1x6x-xxxx	Picosecond pulsed driver board with butterfly DFB-LD module Variable pulse/ Fixed pulse/Pulsed box	ES
NIR	DFB	Driver box	QBB1007	20 ps driver box for SMPM module	ES	
1030 1064	DFB	TO-CAN (Φ5.6)	QLD103E-3050 QLD103E-6450	50 mW, with MPD	ES	
Gain chip	1060	---	Chip	QLF101A	Gain medium for tunable laser	MP
640-940 nm High power FP lasers	785	FP	TO-CAN (Φ5.6)	QLF073x	100 mW, with MPD	MP
	660	FP		QLF063x	50 mW/100 mW/120 mW, with MPD	MP
	640	FP		QLF063A-4030T50	30 mW, with MPD	MP
	640	FP		QLF063A-4080T30	80 mW, 30°C, with MPD	CS
	830	FP		QLF083x	210 mW, with MPD	ES
	940	FP		QLF093x-40B8	285 mW, with MPD, lateral multi-mode	ES
532-594 nm Compact visible lasers	594	DFB +PPLN	Compact PKG	QLD0593-94xx	5 mW/20 mW	UD
	561			QLD0593-61xx	5 mW/20 mW/30 mW/50 mW	CS
	532			QLD0593-32xx	20 mW/30 mW	ES
	488			QLD0493-88xx	30 mW/50 mW	UD
	561		Compact PKG with pigtail	QLD0561-61xx	25 mW, MMF pigtail 15 mW, SMF/PMF pigtail	TS
	488-594		Driver board	QBB0502	Picosecond pulsed driver unit	UD
Epitaxial wafers	1300	QD on GaAs Wafer		QLF1374	Quantum dot epitaxial wafer	ES
	-	III-V on GaAs Wafer		QLFxx7x	Customized epitaxial structure	---
1310 / 1550 nm InGaAsP DFB lasers	1310	DFB	TO-CAN (Φ5.6)	QLD133x	8 mW, 2.5 Gb/s	UD
	1550	DFB	Butterfly PKG with TEC /PMF	QLD156N-5050 QLD156N-5080	50 mW fiber output power 80 mW fiber output power	TS