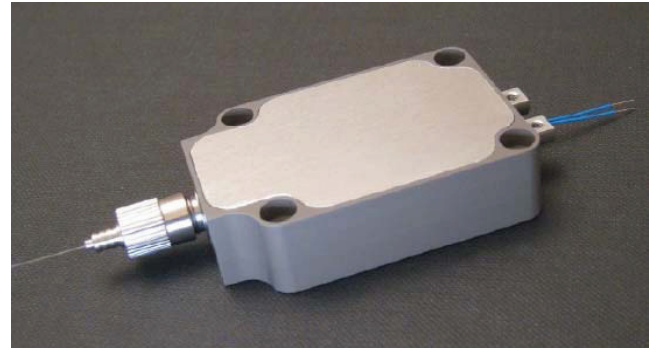


# LDX-FC Series Fiber Coupled Laser Diode Module

## Features:

- High Brightness
- Passively Cooled
- Long Lifetime
- Small Footprint
- Available in wavelengths from 630nm – 1850nm
- Fiber sizes :100um, 200um and 400um (NA0.22)



This fiber coupled laser diode module can use any of the LDX Optronics 100um emitter devices, which makes this a very flexible module. Available wavelengths range from 630nm to 1850nm. Multiple emitters (2, 3 and 4 emitters) can be used in a single package to develop output powers of several 100mW to 10,000mW or more.

Options Available:	Applications:
<ul style="list-style-type: none"> <li>- Monitoring Photodiode</li> <li>- Alternative PT100 thermistor</li> <li>- Intergated TE Coolers</li> </ul>	<ul style="list-style-type: none"> <li>- Fiber-lasers pumping</li> <li>- Solid State Laser pumping</li> <li>- Soldering and Welding</li> <li>- Medical</li> <li>- Illumination</li> <li>- Material Processing</li> </ul>

